

PfiNDE, Inc.
Advanced NDE Services

ADVANCED ULTRASONIC APPLICATIONS

PfiNDE, Inc. offers both Semi-automated and Automated (AUT) encoded imaging versions of our ultrasonic services. Not only does this type of technology provide a permanent record NDE report but also provides repeatable examination performance for comparison with future monitoring of the component.

TECHNOLOGIES

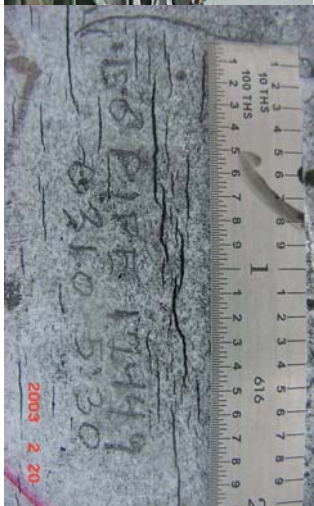
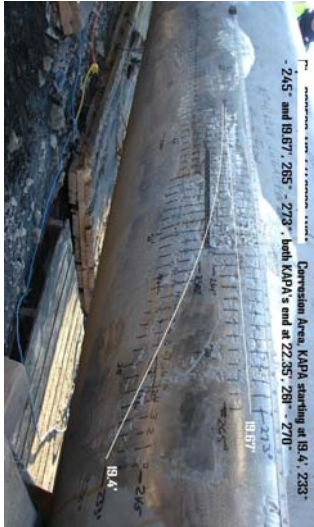
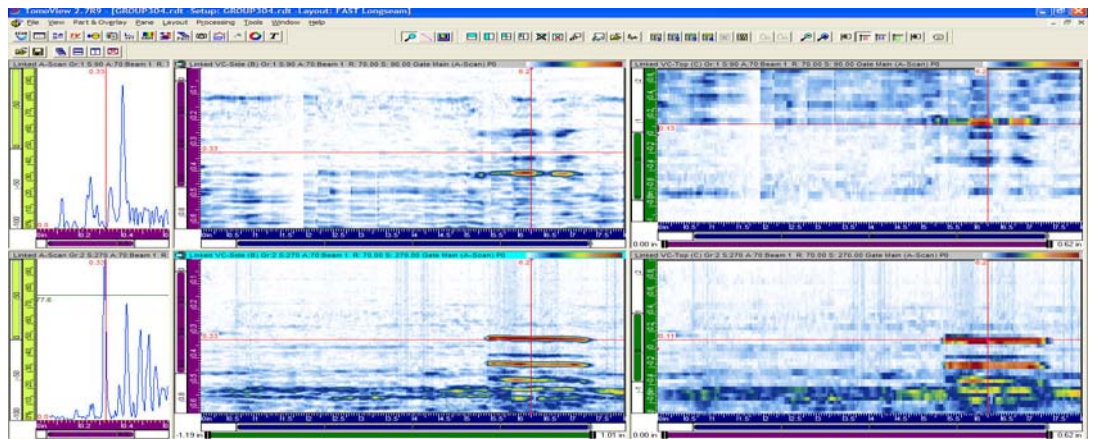
PfiNDE performs Encoded FAST imaging, Phased Array Imaging, Shear Wave Imaging and TOFD Imaging.

Multi - Channel Automated Scanning Systems

- Scanning single or multichannel (up to 16 channels)
- C-scan, B-scan, and end view displays
- Fully encoded imaging using fully automated scanners
- Hand-held scanning equipment is compact and offers hand-held portability

The benefits of FAST technology may be imaged using state-of-the-art data acquisition and storage technology. Linking the scans from both sides allows for detection and through wall sizing in a single line scan.

Linked A-Scan, B-scan, and C-scan Image of Crack Detected in Longitudinal Weld Seam Using Linked 2-Channel FAST

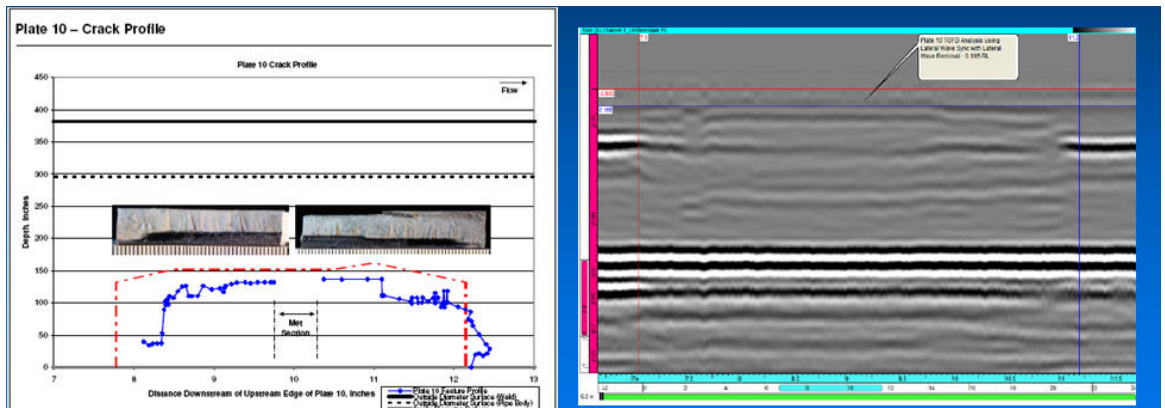


PERFORMANCE QUALIFICATIONS

PfiNDE has demonstrated their Advanced NDE Techniques using actual physical analysis of components removed from service.

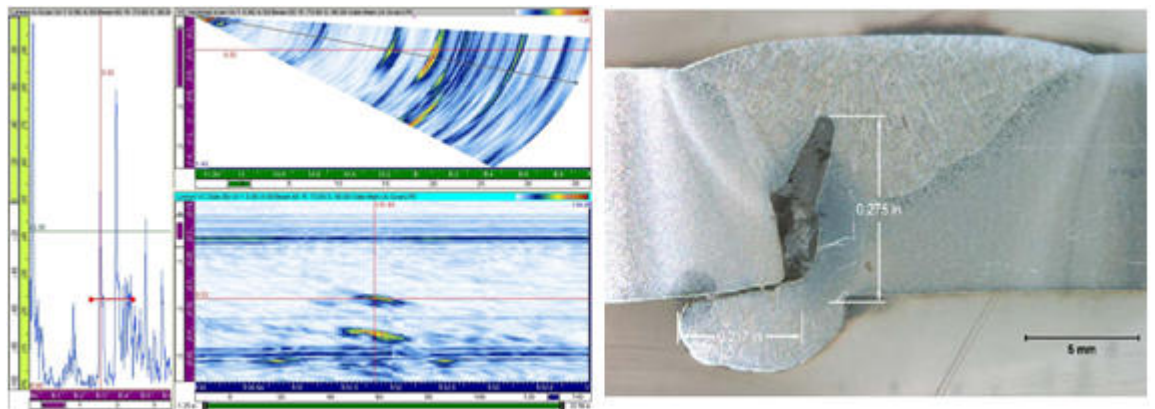
PfiNDE has been successful in using Time-of-Flight Diffraction (TOFD) techniques for imaging flaws in thin-wall materials. Data collected on blind qualification sample has proven the techniques to be accurate.

Physical Analysis vs. TOFD Data



PfiNDE has worked with NDE manufacturers to produce Phased Array Equipment for flaw detection on thin wall materials which can produce detection and through wall sizing in a single line scan.

Phased Array Imaging of Sectioned Defect



12816 South Memorial Dr.
Suite 119
Bixby, OK 74008

918-369-2805 (O) 918-369-2806 (Fax)

166 Ingham Hill Road
Old Saybrook, CT 06475

860-510-0762 (O) 860-519-0782 (Fax)

www.PfiNDE.com - info@PfiNDE.com