

PfiNDE, Inc.

Automated Ultrasonic Corrosion Mapping Services

THE OBJECTIVE

To provide timely, reliable examination, mapping, and reporting of internal corrosion features.

THE LOCATION

Anywhere in USA – 3 rigs available

Dispatched from:

- Duluth, MN
- Tulsa, OK

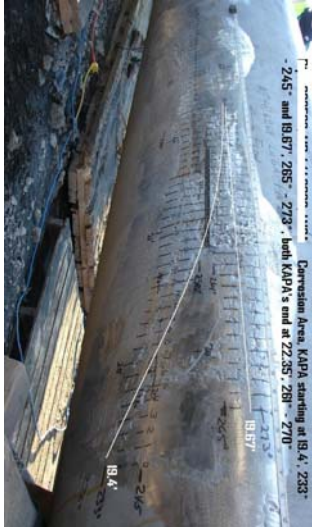
THE SERVICES

Automated Ultrasonic C-Scan.

- Quick deployment from mobile acquisition / analysis trailer
- Automated data acquisition
- Precise axial and circumferential measurement
- Manual ultrasonic prove up
- On site data analysis
- Wave form storage – verification of indications during analysis
- Reporting of A-Scan, B-Scan and C-Scan data
- R-streng automatically performed by analysis software

THE RATES

Firm prices may be provided for projects with will defined scope
Services available 7 days/wk anywhere in the country



12816 South Memorial Dr.
Suite 119
Bixby, OK 74008

166 Ingham Hill Road
Old Saybrook, CT 06475

918-369-2805 (O) 918-369-2806 (Fax)

860-510-0762 (O) 860-519-0782 (Fax)

www.PfiNDE.com - info@PfiNDE.com

Imaged internal corrosion utilizing the Automated Ultrasonic C-MAPPS system

