



PfiNDE, Inc

(formerly Pfannenstiel Innovative Non Destructive Examinations, LLC)

Company Profile

I. THE COMPANY

PfiNDE, Inc is a medium size NDE and Inspection company that is focused on “Pipeline Integrity” inspections.

The PfiNDE business office is in Connecticut. PfiNDE has a training facility, office and shop in Tulsa, OK and an office/shop in Duluth, MN.

Our company is committed to excellent customer service with NDE professionals that are highly trained and have many years of experience.

Though our personnel come from a variety of NDE backgrounds, when working for PfiNDE they are trained in and they are 100% focused on “Pipeline Integrity” projects.

The company recently reorganized into a corporation and facilitated three key personnel into becoming shareholders. The company recognizes the contributions of our personnel to its successes and hopes to expand employee ownership in the future.

The president of the company has 35 years of experience in the NDE field with the last 12 years exclusively in “Pipeline Integrity”. He is an ASNT Professional Level III in 5 methods as well as an AWS CWI. He has spent most of the last 12 years in the “ditch” performing pipeline integrity examinations and training others in that field.

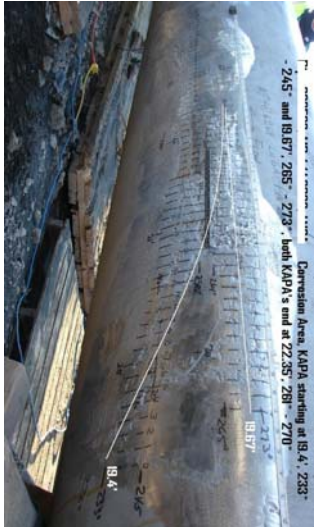
Clients are confident that the job will go well if PfiNDE is providing the NDE services

The company prides itself on excellent quality, cost effective examinations with very thorough documentation.

12816 South Memorial Dr.
Suite 119
Bixby, OK 74008

166 Ingham Hill Road
Old Saybrook, CT 06475

918-369-2805 (O) 918-369-2806 (Fax) 860-510-0762 (O) 860-519-0782 (Fax)
www.PfiNDE.com - info@PfiNDE.com



II. SERVICES

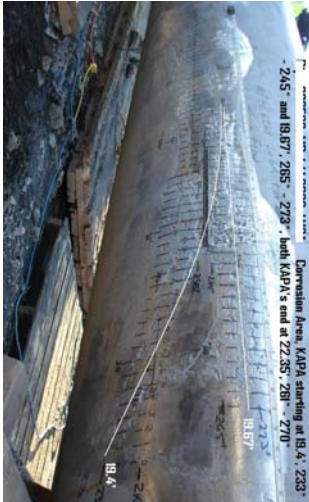
The company was started by solving some ultrasonic inspection problems for a pipeline operator who ran a revolutionary type of ILI crack tool in 1997. From that time on, principals of PfiNDE have been providing high quality and cost-effective services for our customers as NDE specialists for ILI validation and repair programs.

The company normally provides the following services to ILI rehabilitation projects:

- Long seam crack detection and characterization using ultrasonic inspection (UT), normally with manual FAST UT.
- UT crack sizing for ID and OD cracks in long seams and pipe body
- SCC evaluations, sizing and documentation.
 - SCC removal
 - UT depth sizing
- Corrosion evaluation and documentation including associated SCC examinations
- Dent evaluation and documentation
- Weld repair inspection and documentation
- Welder qualification services
 - Witness qualification tests
 - Mobile testing trailer for welder quals
- Trimble GPS location and documentation of locations
- Pipe to soils potential measurements, soil ph, soil resistivity
- Documentation of as found coating condition and as found corrosion deposits
- Soil documentation at excavation sites

Advanced technology services the company provides include:

- FAST UT detection and sizing
- Phased Array UT
- TOFD
- Automated C-scan corrosion mapping
- Permanent record of UT exams
- Semi automated angle beam UT including FAST UT
- Multi-channel automated and semi automated UT that includes FAST and TOFD.



III. PERSONNEL – QUALIFICATIONS & TRAINING

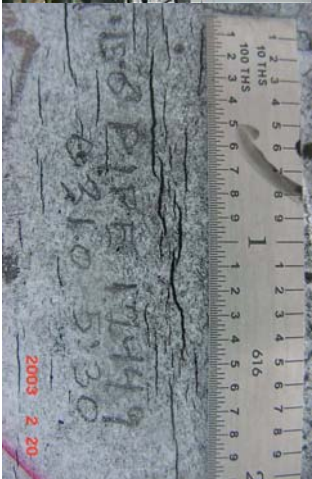
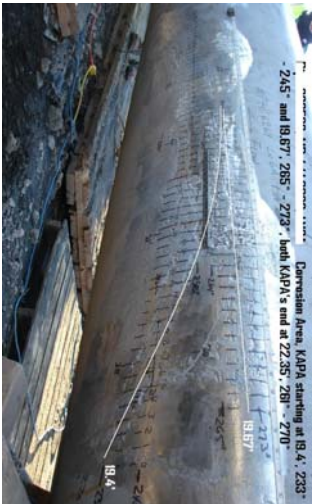
Personnel are selected based upon their experience and training. More importantly personnel are selected based upon their references and their reputation for integrity and competence in the field of NDE. We are confident that we have the most experienced team of NDE professionals that is available to “Pipeline Integrity” projects.

- Personnel are certified in accordance with ASNT SNT-TC-1A.
- As of March 2009 the company has 27 full time technicians. That group includes:
 - 5 nationally certified ASNT UT Level III’s.
 - 17 AWS CWIs
 - 6 fully qualified through EPRI for UT detection and sizing on piping and other qualifications for PDI
- Personnel have Operator Qualification (OQ) through NCCER and are in the ISNETworld data base
- Several of the personnel have OQ through Veriforce
- Personnel are trained in house extensively in “Pipeline Integrity”.
- Personnel are trained in UT depth sizing using FAST UT and other manual UT sizing techniques
- Each technician is comfortable with computers and all reports are generated by them in electronic format. Each technician has a truck mounted computer for “on site” preparation of electronic reports.
- Safety training is handled “in house” through our full time safety engineer
- We have committed substantial resources to developing in house training for “pipeline integrity” and specialized NDE training related to that. The training relies heavily on samples that we have designed and purchased as well as samples procured from field cutouts. As of January 2009 our training facility in Tulsa is the hub for the classroom training.
- Field training is extensive with each new technician assigned to a mentor for as long as necessary to ensure that he is ready to work on his own.

12816 South Memorial Dr.
Suite 119
Bixby, OK 74008

166 Ingham Hill Road
Old Saybrook, CT 06475

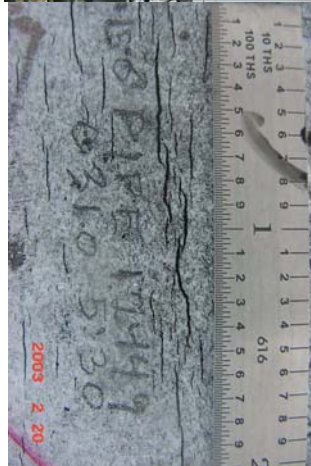
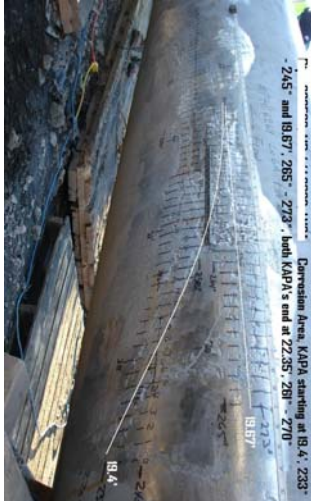
918-369-2805 (O) 918-369-2806 (Fax) 860-510-0762 (O) 860-519-0782 (Fax)
www.PfiNDE.com - info@PfiNDE.com



IV. MARKETS & CLIENTS

As of winter 2009, we have projects working in:

- Wisconsin
- Michigan
- Ohio
- Illinois
- Wyoming
- Texas
- Minnesota
- Oklahoma
- North Dakota
- Indiana
- Missouri
- Iowa
- Alberta
- Saskatchewan
- Ohio
- Pennsylvania
- Kansas
- Nebraska
- Colorado
- New York



PfiNDE has Master Services Agreements or POs with the clients listed below. We pride ourselves on long term relationships with our clients.

Customer	Project type
Enbridge	Pipeline Integrity since 2001
Enterprise Products (EPCO)	Pipeline Integrity since 2004
Kinder Morgan Canada	Pipeline Integrity since 1998
Kinder Morgan US	Pipeline Integrity since 2008
ExxonMobil	Pipeline Integrity since 2005
Kinder Morgan CO2	Pipeline Integrity since 2009
Sunoco Logistics	Pipeline Integrity since 2008
Magellan	Pipeline Integrity since 2008
TransCanada Pipelines	Power plant NYC since 2008
National Grid	Power plants NY since 1998
Lake Superior Consulting	Pipeline Projects since 2005

12816 South Memorial Dr.
Suite 119
Bixby, OK 74008

166 Ingham Hill Road
Old Saybrook, CT 06475

918-369-2805 (O) 918-369-2806 (Fax) 860-510-0762 (O) 860-519-0782 (Fax)
www.PfiNDE.com - info@PfiNDE.com